

Scaled data based on original data using
LM-79-08 Approved Method: Electrical and Photometric Measurements of Solid-State
Lighting Products

Test Report Prepared for
Cooper Lighting Solutions
(formerly Eaton)

Brand: LUMIERE

Report Number: G2-1802-569-45

Luminaire Tested: **203-SS-8LED4036-12-CS-LSL**

Test Date: 04/06/18

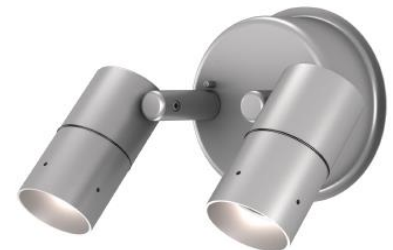
Test Information

Test Method: LM-79-08
Report Number: G2-1802-569-45
REPORT IS SCALED FROM IESNA LM-79-08 TEST DATA (G2-1802-569-45)
Test Lab: INNOVATION CENTER(G2)
Test Date: 04/06/18
Issue Date: 3/3/2020
Manufacturer: COOPER LIGHTING SOLUTIONS (FORMERLY EATON)
Product Line: LUMIERE
Catalog Number: 203-SS-8LED4036-12-CS-LSL
Description: CAMBRIA 203 LED LUMINAIRE, 8 WATT, 4000K CCT, 36 DEGREE WIDE OPTIC,
REGRESSED HOOD SILVER, LINEAR SPREAD LENS
Light Source: (1) SORAA 4000K 90 CRI LED
SM16-07-36D-940-03
Ballast/Driver: (1) CHROMA POWER SUPPLY IN0004

Summary

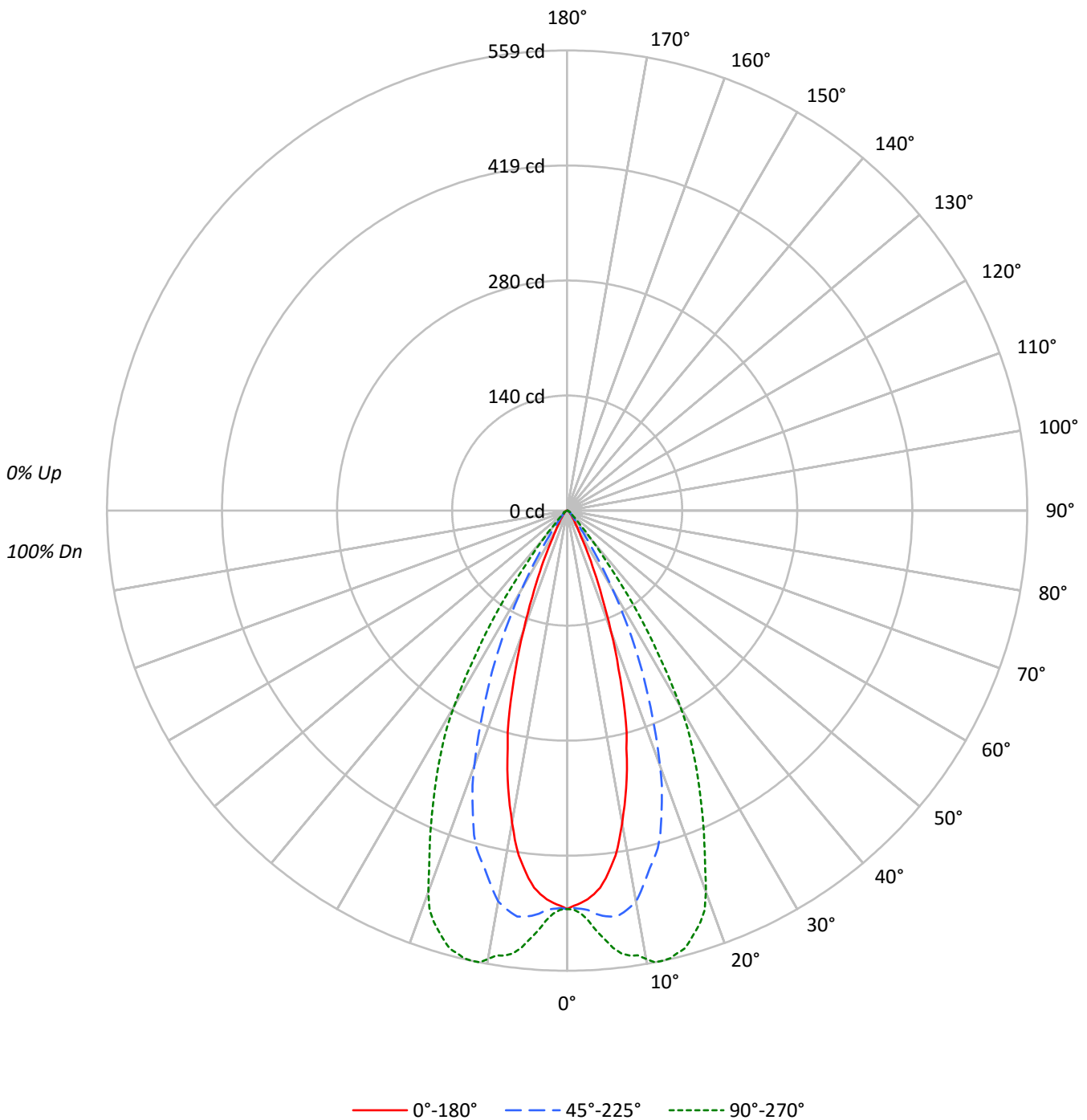
Lumens per Lamp: N/A
Luminaire Lumens: 317.4 lumens
Efficiency: N/A
Efficacy: 41.8 lumens/watt
Spacing Criteria (0/90/45): 0.55 / 1.02 / 0.74
Luminous Opening: Circular (Dia: 0.17' x H: 0')
CIE Type: Direct

Input Watts (W): 7.6
Input Voltage (V): 12.0
Input Current (Ain): 0.669
Voltage Rise (V): NR
Power Factor: 0.9907
Total Harmonic Distortion (THDi): 27.4
Frequency (hertz): 60
Stabilization Time: 0.5 HR
Operation Time: 3 HR
Ambient Temperature (°C): 25.2
Test Distance: 25 FT



TEST NUMBER: G2-1802-569-45
CATALOG NUMBER: 203-SS-8LED4036-12-CS-LSL

Luminous Intensity Polar Plot





TEST NUMBER: G2-1802-569-45

CATALOG NUMBER: 203-SS-8LED4036-12-CS-LSL

COEFFICIENT OF UTILIZATION - ZONAL CAVITY METHOD:

RF	20					20					20					20					20					
RC	80					70					50					30					10					0
RW	70	50	30	10	70	50	30	10	50	30	10	50	30	10	50	30	10	50	30	10	50	30	10	0		
RCR																										
0	119	119	119	119	116	116	116	116	111	111	111	106	106	106	102	102	102	100	100	100	100	100	100	100		
1	114	111	109	107	111	109	107	105	105	103	102	101	100	99	98	97	96	94	94	94	94	94	94	94		
2	109	104	100	97	107	103	99	96	99	97	94	96	94	92	94	92	90	89	89	89	89	89	89	89		
3	104	98	93	90	102	97	92	89	94	91	88	92	89	86	89	87	85	83	83	83	83	83	83	83		
4	99	92	87	83	98	91	87	83	89	85	82	87	84	81	85	82	80	79	79	79	79	79	79	79		
5	95	87	82	78	93	86	81	78	85	80	77	83	79	76	81	78	76	74	74	74	74	74	74	74		
6	91	83	77	73	89	82	77	73	80	76	73	79	75	72	78	74	72	70	70	70	70	70	70	70		
7	87	78	73	69	86	78	73	69	77	72	69	75	71	68	74	71	68	67	67	67	67	67	67	67		
8	83	75	69	65	82	74	69	65	73	68	65	72	68	65	71	67	65	63	63	63	63	63	63	63		
9	80	71	66	62	79	71	65	62	70	65	62	69	65	62	68	64	61	60	60	60	60	60	60	60		
10	77	68	63	59	76	67	62	59	67	62	59	66	62	59	65	61	59	57	57	57	57	57	57	57		

AVERAGE LUMINANCE (cd/sqm):

	0°	45°	90°
0°	238796	238796	238796
5°	227822	244661	259023
10°	192881	241478	277048
15°	142509	217083	281442
20°	81382	173264	258846
25°	37018	117587	208499
30°	15382	63237	156669
35°	9035	23490	84925
40°	5797	9661	28983
45°	4186	5582	10466
50°	3838	4605	5373
55°	3441	3441	4301
60°	2960	2960	3947
65°	2335	2335	2335
70°	1443	1443	2885
75°	1906	1906	1906
80°	0	2841	2841
85°	0	0	0



TEST NUMBER: G2-1802-569-45

CATALOG NUMBER: 203-SS-8LED4036-12-CS-LSL

ZONAL LUMENS:

Zone	Lumens	% Fixture
0°-10°	46.5	14.7
10°-20°	115.0	36.2
20°-30°	100.0	31.5
30°-40°	40.4	12.7
40°-50°	8.1	2.6
50°-60°	3.9	1.2
60°-70°	2.2	0.7
70°-80°	1.1	0.3
80°-90°	0.2	0.1
90°-100°	0.0	0.0
100°-110°	0.0	0.0
110°-120°	0.0	0.0
120°-130°	0.0	0.0
130°-140°	0.0	0.0
140°-150°	0.0	0.0
150°-160°	0.0	0.0
160°-170°	0.0	0.0
170°-180°	0.0	0.0
0°-30°	261.5	82.4
0°-40°	301.9	95.1
0°-60°	314.0	98.9
0°-90°	317.4	100.0
90°-120°	0.0	0.0
90°-150°	0.0	0.0
90°-180°	0.0	0.0
0°-180°	317.4	100.0

CANDELA DISTRIBUTION:

	0°	22.5°	45°	67.5°	90°	Flux
0°	484	484	484	484	484	
5°	460	471	494	515	523	42
15°	279	327	425	517	551	74
25°	68	93	216	339	383	33
35°	15	17	39	109	141	10
45°	6	7	8	12	15	5
55°	4	4	4	5	5	3
65°	2	2	2	2	2	2
75°	1	1	1	1	1	1
85°	0	0	0	0	0	0
90°	0	0	0	0	0	0



TEST NUMBER: G2-1802-569-45

CATALOG NUMBER: 203-SS-8LED4036-12-CS-LSL

CANDELA DISTRIBUTION (FULL):

	0°	22.5°	45°	67.5°	90°
0°	484	484	484	484	484
1°	480	482	483	484	485
2°	477	479	484	489	490
3°	473	477	486	496	499
4°	467	475	491	506	512
5°	460	471	494	515	523
6°	449	466	496	523	534
7°	436	457	497	530	542
8°	423	446	493	533	546
9°	405	433	488	530	547
10°	385	419	482	529	553
11°	365	402	471	531	559
12°	345	384	458	533	559
13°	323	366	446	529	558
14°	298	347	436	524	554
15°	279	327	425	517	551
16°	254	305	410	508	543
17°	228	281	391	497	534
18°	202	254	372	485	525
19°	180	225	353	473	513
20°	155	198	330	459	493
21°	134	172	306	441	468
22°	113	149	282	416	446
23°	96	128	259	388	425
24°	81	109	237	363	404
25°	68	93	216	339	383
26°	56	78	194	315	363
27°	45	64	172	294	343
28°	37	53	150	271	322
29°	31	44	131	247	301
30°	27	36	111	227	275
32.5°	19	24	68	169	205
35°	15	17	39	109	141
37.5°	11	13	23	62	79
40°	9	10	15	31	45
42.5°	8	8	11	18	23
45°	6	7	8	12	15
47.5°	5	6	7	8	9
50°	5	5	6	6	7
52.5°	4	5	5	5	6
55°	4	4	4	5	5
57.5°	3	3	4	4	4
60°	3	3	3	4	4
62.5°	2	2	3	3	3
65°	2	2	2	2	2



TEST NUMBER: G2-1802-569-45

CATALOG NUMBER: 203-SS-8LED4036-12-CS-LSL

CANDELA DISTRIBUTION (continued):

	0°	22.5°	45°	67.5°	90°
67.5°	2	2	2	2	2
70°	1	1	1	2	2
72.5°	1	1	1	1	1
75°	1	1	1	1	1
77.5°	1	1	1	1	1
80°	0	0	1	1	1
82.5°	0	0	0	1	1
85°	0	0	0	0	0
87.5°	0	0	0	0	0
90°	0	0	0	0	0

(END OF REPORT)